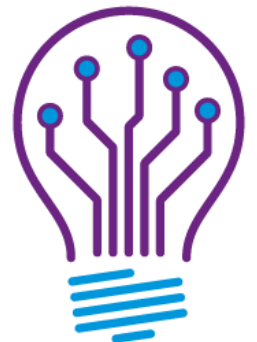


Scottish Radiology Transformation Programme



Supporting the delivery of a world class,
person-centred sustainable radiology service
that continually improves the health and
wellbeing of the people of Scotland.

Jillian Patte
National Programme Director



The Case for Change

Current Radiology Services are Unsustainable

- **Insufficient capacity** to meet demand
- **Demand is increasing** – 3.4% per year = £1.2m per year.
- **Waiting times are increasing** – 70% increase in patients waiting over six weeks (rise from 6,700 in Dec 2018, to 11,300 in Dec 2019).
- **Costs are increasing** – Reporting outsourcing costs of £11.6m, net cost 2015/16 = £221m, 2019/20 = £244m.

Risk that radiology services will fail...

...impacting patient diagnosis and treatment in acute and primary care.



Transforming Radiology Services

- The Programme is looking at areas spanning workforce, technology & innovation and service models.
- Phase One laid the foundations to support the delivery of the vision for Radiology in Scotland.
- Phase Two is building on this.



Overarching Vision and TOM




1. Vision

What kind of service do we aspire to?

2. Current Operating Model

What does the service look like today?

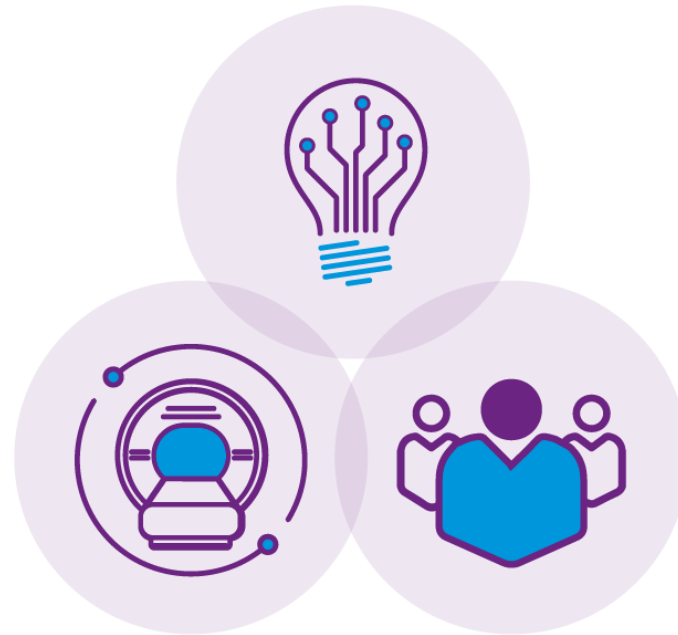


3. Target Operating Model

What could the service to deliver the vision look like?

4. Roadmap

What are the steps to bridge the gap between today and the future?



Radiology Vision and Principles

1. Examinations that **add value** to the patient journey with no detriment. (Realistic Radiology)

2. **Equitable access to imaging services** including **expert opinion available** regardless of patient location.

3. Image acquisition as **close to home** as practically possible.

10. **Investment in our people** to ensure they have the skills to deliver the needs of the service.

A world class, person-centred sustainable radiology service that continually improves the health and wellbeing of the people of Scotland

4. **Timely access** to investigations and their results.

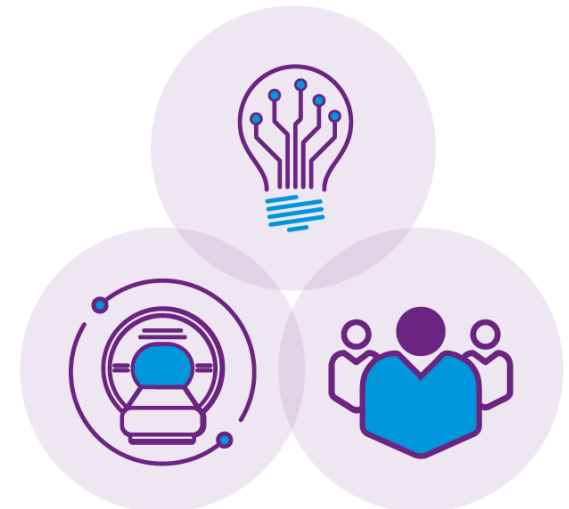
9. A **great place to work** where the team is valued, motivated and multi-disciplinary.

5. **Information to patients** to make sure they are clear about their journey, options and results.

8. An **innovative** service that continually strives to improve, and benefits from emerging technologies and learning from similar services across the world

7. A **locally delivered** service, informed by local needs, supported by **regional and national coordination and collaboration** where this adds value, resilience and sustainability.

6. **Patient-centred** services using fully **integrated data and technology** to deliver the right test at the right time.



Thank you

www.radiology.scot.nhs.uk/

[Email: NSS.S.R.T.P@NHS.SCOT](mailto:NSS.S.R.T.P@NHS.SCOT)

